

**: F9EI 9B7M8CI 6 @F !'FDG-4A-1600'GE**

**TECHNICAL FEATURE**

**FEATURES**

- 25 to 3000 MHz
- Minimum Spurious Output
- Miniature SMD Package
- Ideal for Multiplier Chains

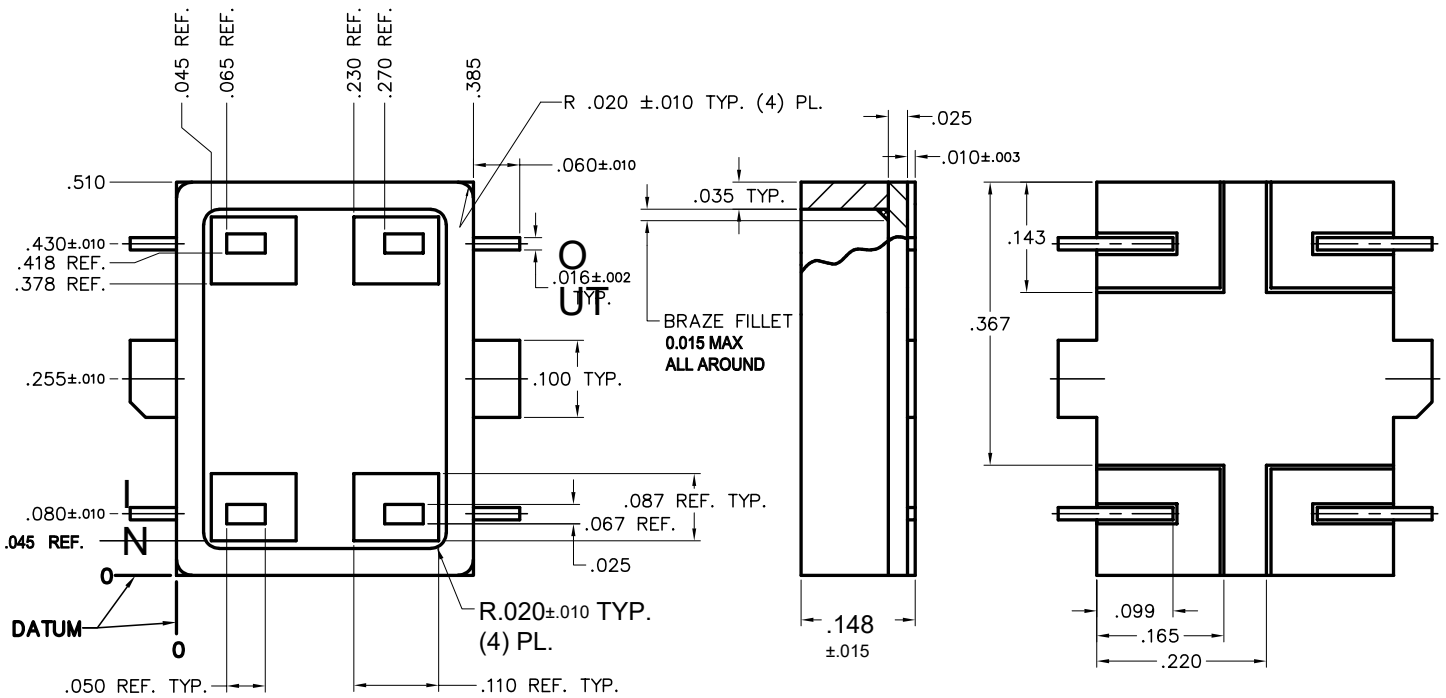
Model Number	Input Frequency, MHz	Input Frequency, Operating, MHz	Conversion Loss, dB		*Typical Harmonic Output, Min.		RF Input Power, Nom.	Weight, oz (g), Nom.
			Typ.	Max.	F1dB	F3 dB		
FDG-4B-500 SQ	5-500	5-100	12	14	-30	-40	+13dBm	0.1 (2.83)
		100-200	12	14	-25	-35		
		200-500	13	17	-25	-35		

**General Notes:**

1. The FDG-4B-500 SQ covers the frequency range of 5 to 500 MHz using lumped element technology for broad bandwidths and excellent rejection of fundamental and third harmonic energy.
2. Crane frequency doublers comply with the applicable sections of MIL-M-28837 and is qualified for Space application requiring the highest reliability.

**General Specifications**

Impedance: 50 Ω Nom.  
 Usable Input Range: +7 to 16 dBm  
 Input VSWR: 5-500 MHz: 2.0:1 typ.  
 Operating Temperature: -55°C to + 85°C



**Crane Aerospace & Electronics**  
 Microwave Solutions – Merrimac Industries  
 41 Fairfield Place, West Caldwell, NJ 07006  
 + 1.973.575.1300 ext. 1309 • [mw@crane-eg.com](mailto:mw@crane-eg.com)  
[www.craneae.com/mw](http://www.craneae.com/mw)



FDG4A.doc. This revision supersedes all previous releases. All technical information is believed to be accurate, but no responsibility is assumed for errors. We reserve the right to make changes in products or specifications without notice. Copyright © 2013 Crane Electronics, Inc. All rights reserved.