

: F9EI 9B7M8CI 6 @F !'FDG-4A-1600'GE

TECHNICAL FEATURE

FEATURES

- 25 to 3000 MHz
- Minimum Spurious Output
- Miniature SMD Package
- Ideal for Multiplier Chains

Model Number	Input Frequency, MHz	Input Frequency, Operating, MHz	Conversion Loss, dB		*Typical Harmonic Output		RF Input Power, Nom.	Weight, oz (g), Nom.
			Typ.	Max.	F1dB	F3 dB		
FDG-4A-1600 SQ	25-3000	25-600	12	14	-27	-30	+13dBm	0.09 (2.5)
		600-2500	12	13	-18	-30		
		2500-3000	13	15.5	-15	-20		

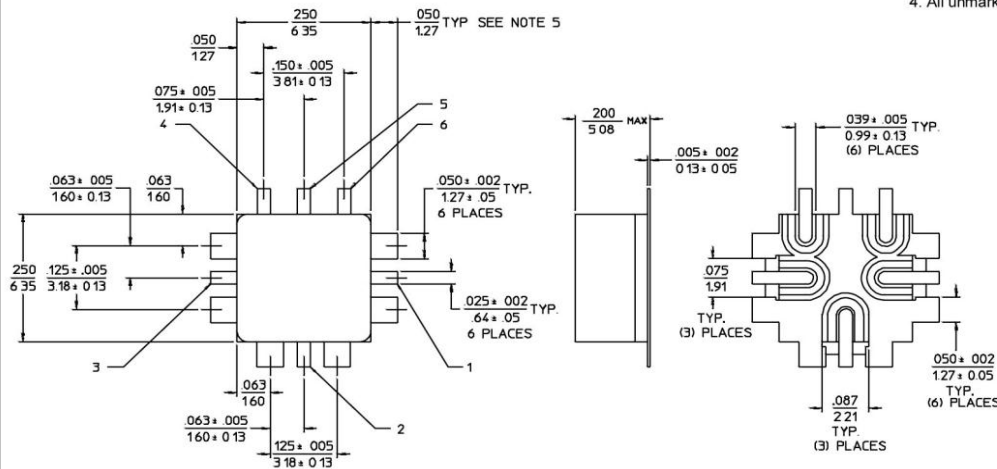
General Notes:

1. The FDG-4A-1600 SQ covers the frequency range of 25 to 3000 MHz using lumped element technology for broad bandwidths and excellent rejection of fundamental and third harmonic energy.
2. Crane frequency doublers comply with the applicable sections of MIL-M-28837 and is qualified for Space application requiring the highest reliability.

General Specifications

Impedance: 50 Ω Nom.
 Usable Input Range: +7 to 16 dBm
 Input VSWR: 25-500 MHz: 1.3:1 typ.
 500-3000MHz: 1.8:1 typ.
 Operating Temperature: -55°C to + 85°C

Outline A-package



- NOTES: 1. Tolerance on 3 place decimals ±.010(.25) except as noted.
 2. Dimensions in inches over millimeters.
 3. Dimensions marked with * apply only at body.
 4. All unmarked pins are case ground.

PIN NO.	FUNCTION
1	INPUT
2	GROUND
3	OUTPUT
4	GROUND
5	GROUND
6	GROUND

