

QUAD HYBRID - QHDZ-2BH-0.33G

TECHNICAL FEATURE

FEATURES

- 225 - 400 MHz
- High Isolation
- Low Loss
- Excellent Phase / Amplitude Balance
- High Power Handling
- Surface Mount



PERFORMANCE

Frequency Range	225 - 400 MHz
Isolation	20 dB min.
Insertion Loss	0.20 dB max.
VSWR.....	1.20:1 max.
Amplitude Balance	±0.4 dB max.
Phase Balance	90 ± 3° max.
Input Power	125 watts max.
RF Interface.....	Surface mount
Operating Temperature Range	-55 to +95°C

DESCRIPTION

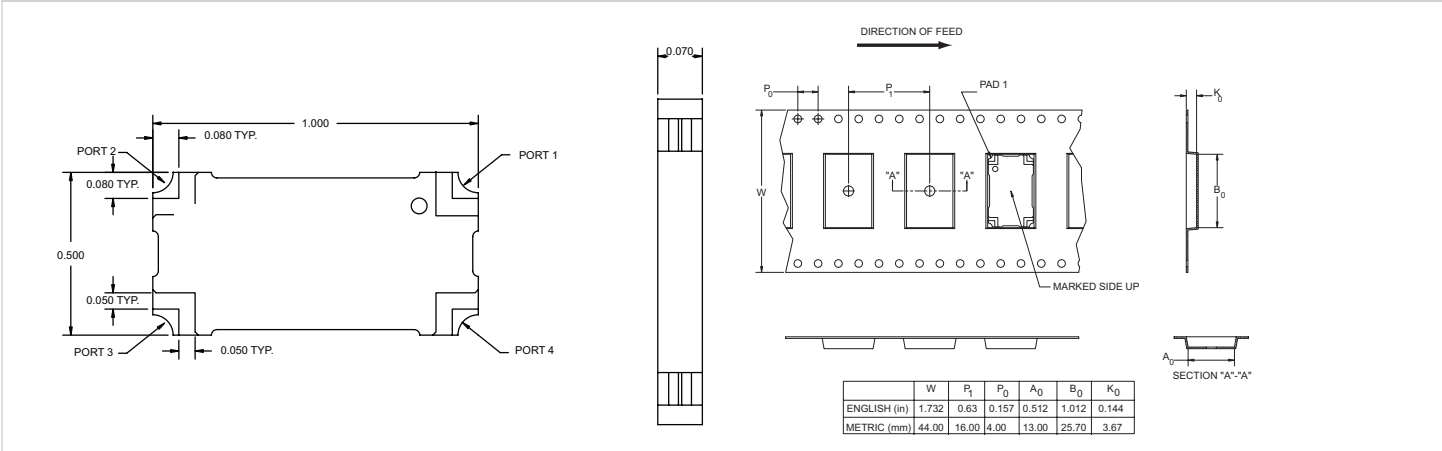
The QHDZ-2BH-0.33G series is a member of the Multi-Mix® Zapper® QHDZ family of 3-dB 90° couplers for use in the 225-400 MHz range. The QHDZ-2BH-0.33G exhibits low insertion loss, low VSWR, and high isolation. Excellent phase and amplitude balance and high RF power handling capability make this series ideal for use in base station power amplifiers in particular and radio transceivers, receiver/antenna multicouplers and RF signal distribution and processing equipment in general.

The construction of QHDZ quad hybrids is based on fusion bonded multilayer stripline structures. The fusion bonding process yields homogeneous monolithic dielectric structures with reliability, ruggedness, and electrical and thermal performance that are superior to conventional adhesive bonding techniques.

Applications:

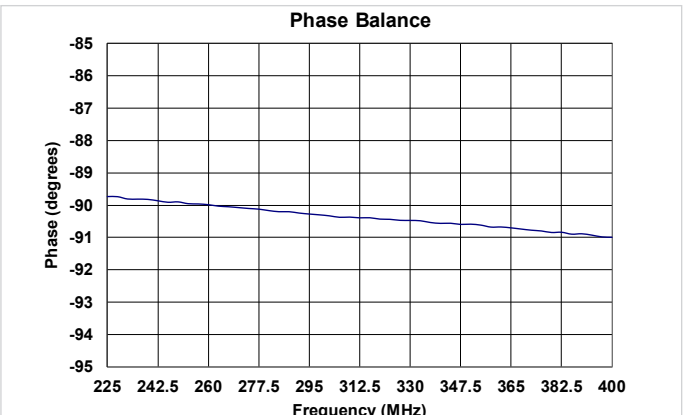
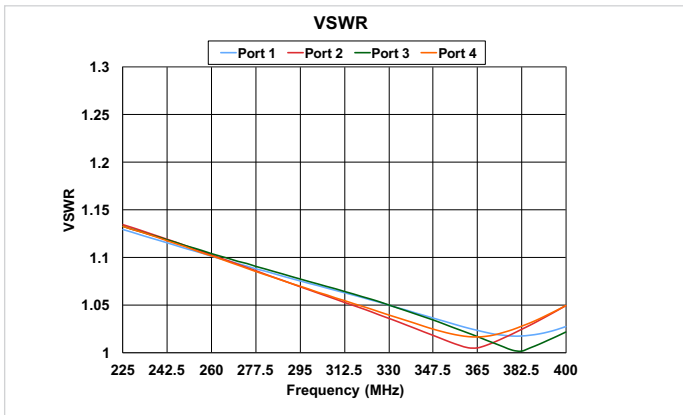
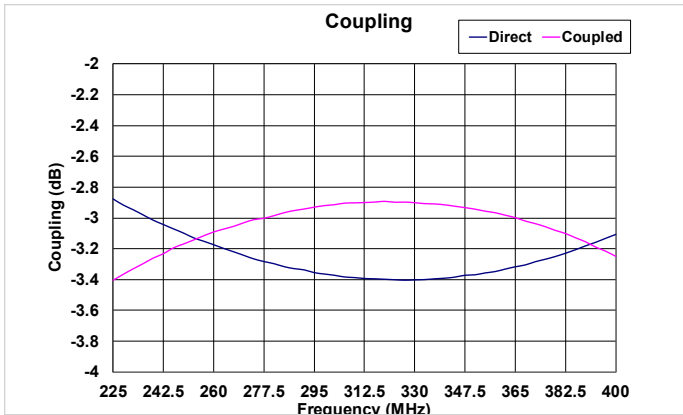
- Base station power amplifiers

PACKAGE OUTLINE / TAPE & REEL ORIENTATION

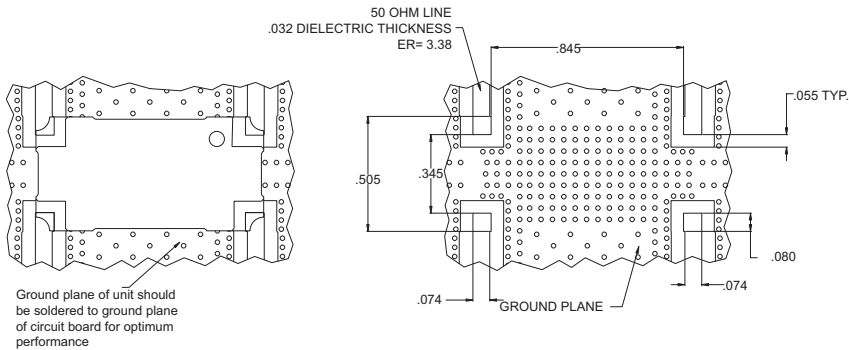


QUAD HYBRID - QHDZ-2BH-0.33G

PERFORMANCE DATA



MOUNTING GUIDELINES



TRUTH TABLE

	1	2	3	4
1	Input	Iso	-90°	0°
2	Iso	Input	0°	-90°
3	-90°	0°	Input	Iso
4	0°	-90°	Iso	Input

DS_Quad_QHDZ2BH033G_062416.indd. This revision supersedes all previous releases. All technical information is believed to be accurate, but no responsibility is assumed for errors. We reserve the right to make changes in products or specifications without notice. Copyright © 2016 Crane Electronics, Inc. All rights reserved.

