

TECHNICAL FEATURE

FEATURES

- 130 - 174 MHz
- High Isolation
- Low Loss
- Excellent Phase / Amplitude Balance
- High Power Handling
- Surface Mount

PRINCIPAL SPECIFICATIONS

Model Number	Frequency Range MHz	Insertion Loss dB Max.	Amplitude Balance dB Max.	Phase Balance Max.	VSWR, Max. All Ports	Isolation dB Min.	Input Power Max.
QHDZ-2BH-0.15GB	130 - 174	0.35	± 0.4 dB	90 ± 4 °	1.12:1	25	125

GENERAL NOTES

The QHDZ-2BH-0.15BG series is a member of the Multi-Mix® Zapper® QHDZ family of 3-dB 90° couplers for use in the 130-174 MHz range. The QHDZ-2BH-0.15BG exhibits low insertion loss, low VSWR, and high isolation. Excellent phase and amplitude balance and high RF power handling capability make this series ideal for use in base station power amplifiers in particular and radio transceivers, receiver/antenna multicouplers and RF signal distribution and processing equipment in general.

The construction of QHDZ quad hybrids is based on fusion bonded multilayer stripline structures. The fusion bonding process yields homogeneous monolithic dielectric structures with reliability,

ruggedness, and electrical and thermal performance that are superior to conventional adhesive bonding techniques.

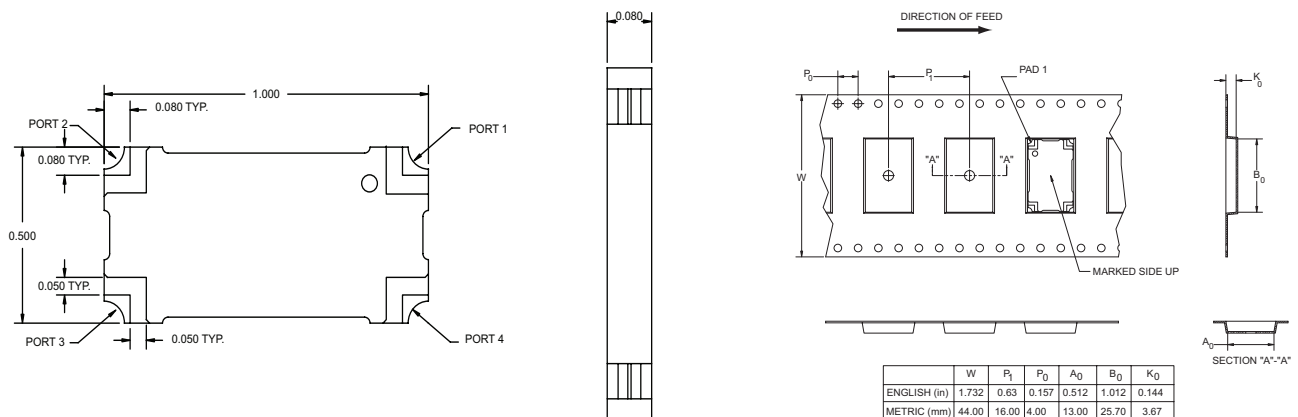
Applications:

VHF land mobile radio base station power amplifiers

GENERAL SPECIFICATIONS

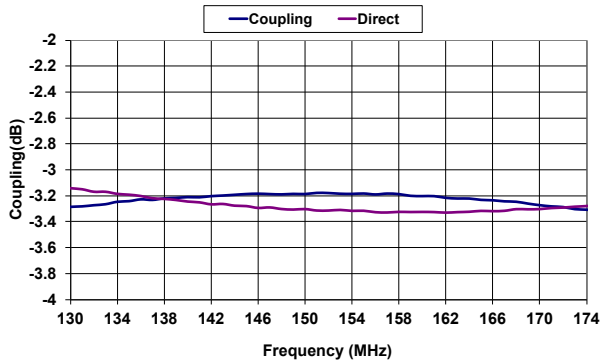
Size 0.25" x 0.20" x 0.091"
 Weight, typical 0.065 oz. (1.84 g)
 RF Interface Surface Mount
 Operating Temperature -55° to +95° C

PACKAGE OUTLINE / TAPE & REEL ORIENTATION

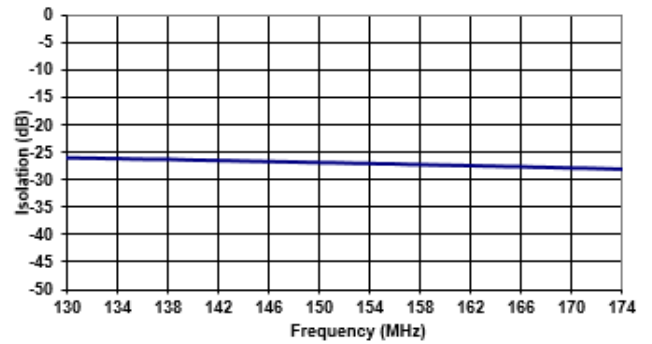


QUAD HYBRID - QHDZ-2BH-0.15GB

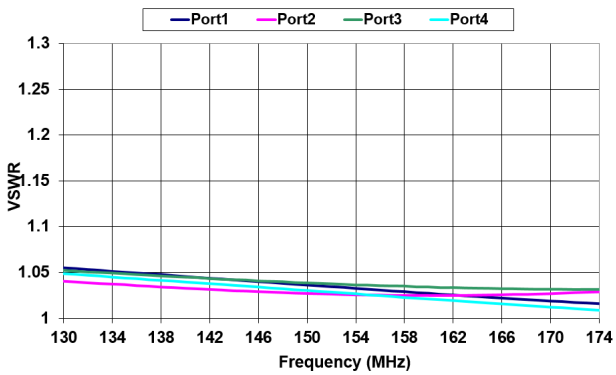
COUPLING



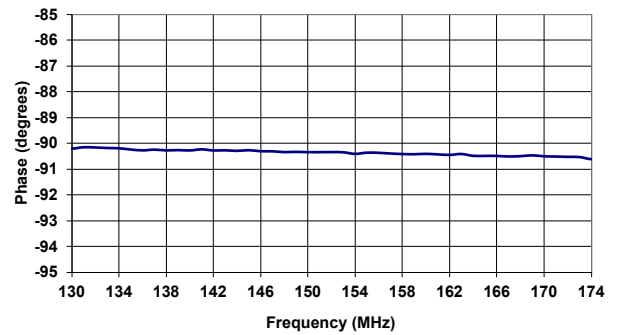
ISOLATION



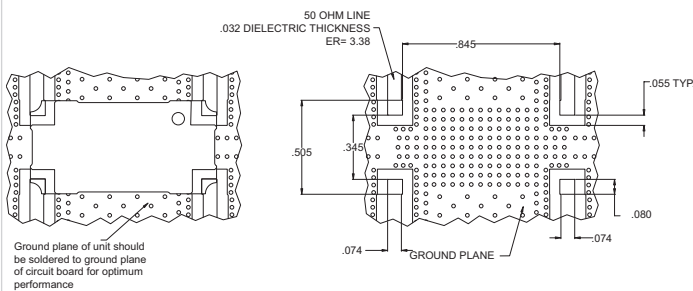
VSWR



PHASE BALANCE



MOUNTING GUIDELINES



TRUTH TABLE

	1	2	3	4
1	Input	Iso	-90°	0°
2	Iso	Input	0°	-90°
3	-90°	0°	Input	Iso
4	0°	-90°	Iso	Input