

TECHNICAL FEATURE

FEATURES

- Space Qualified
- 21.25 - 141.25 MHz
- 3 - Way

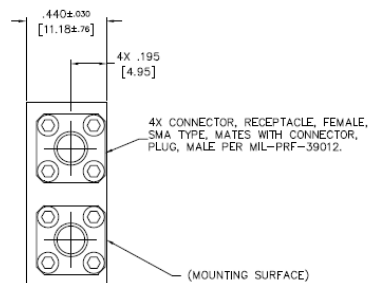
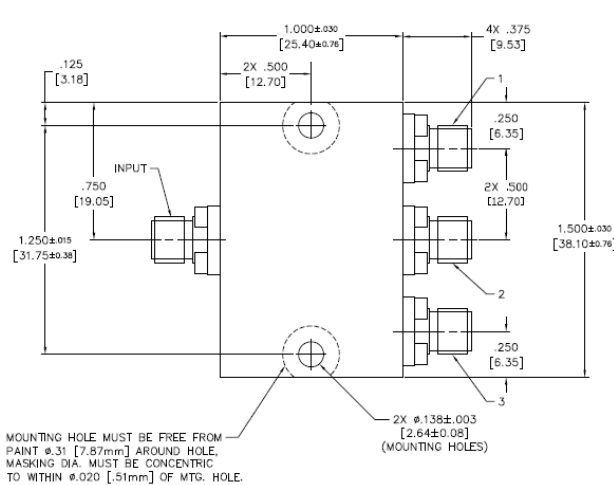
PRINCIPAL SPECIFICATIONS

Model Number	Frequency Range MHz	Isolation dB Min.	Insertion Loss, dB Max.	Phase Balance Max.	Amplitude Balance dB Max.	VSWR Max.		CW Input, W, Load VSWR out 1.2:1	Weight Max.
						In	Out		
PDML-30-81 SQ	21.25 - 141.25	30	0.7	±3°	0.3	1.15:1	1.15:1	1	40 g.

TECHNICAL DESCRIPTION / APPLICATION

The PDML-30-81 SQ In-Phase Power Divider covers 21.25 - 141.25 MHz. With a special lumped element design to reduce size, while maintaining high performance. This unit has been designed, manufactured, and qualified per Merrimac document CENG-0001, "Standard Design Requirements for Space Qualified Devices."

PACKAGE OUTLINE



NOTES:

1. TOLERANCE ON 3 PLACE DECIMALS ±.020 [.51mm] EXCEPT WHERE NOTED.
2. MAX. IS LARGEST DIMENSION ALLOWED.
3. DIMENSIONS = INCHES [mm]
4. METRIC EQUIVALENTS ARE TO THE NEAREST .01mm
5. EXTERNAL FINISH:
EXTERIOR SURFACES: FLAT BLACK POLYURETHANE COATING
AEROGLAZE Z306 (EXCEPT MOUNTING SURFACE TOP MOUNTING HOLE AREA AND AREA AROUND VENT HOLES AND VENT SLOT).
MOUNTING AND UNPAINTED SURFACE FINISH:
CHEMICAL FILM PER MIL-DTL-5541, CLASS 3.
CONNECTOR FINISH: PASSIVATED.
6. WEIGHT: 1.41 OZ. [40g] MAX.