

### TECHNICAL FEATURE

#### FEATURES

- Space Qualified
- 13.75- 14.75 GHz
- 5 - Way

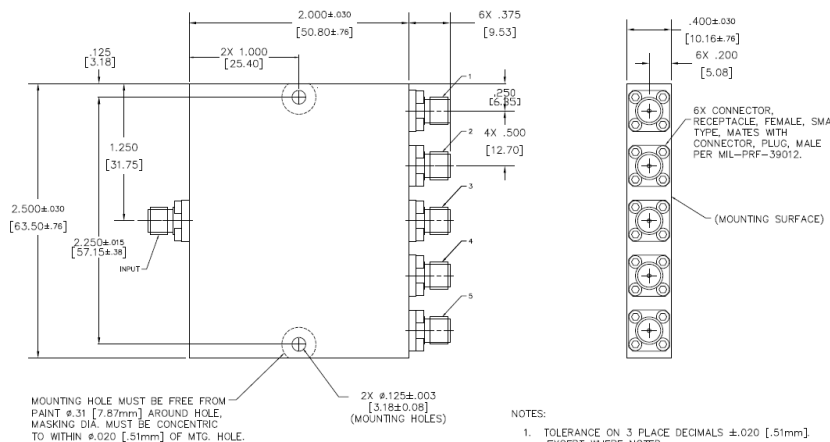
### PRINCIPAL SPECIFICATIONS

Model Number	Frequency Range GHz	Isolation dB Min.	Insertion Loss, dB Max.	Phase Balance Max.	Amplitude Balance dB Max.	VSWR Max.		CW Input, W, Load VSWR out 1.2:1	Weight Max.
						In	Out		
PDM-51-14.25G SQ	13.75- 14.75	16	1.3	10°	0.5	1.35:1	1.35:1	2	115 g.

### TECHNICAL DESCRIPTION / APPLICATION

The PDM-51-14.25G SQ In-Phase Power Divider covers 13.75- 14.75 GHz. It uses a wideband stripline design which provides high isolation and low VSWR. This unit has been designed, manufactured, and qualified per Merrimac document CENG-0001, "Standard Design Requirements for Space Qualified Devices."

### PACKAGE OUTLINE



- NOTES:
1. TOLERANCE ON 3 PLACE DECIMALS ±.020 [51mm] EXCEPT WHERE NOTED.
  2. MAX. IS LARGEST DIMENSION ALLOWED.
  3. DIMENSIONS = INCHES [mm]
  4. METRIC EQUIVALENTS ARE TO THE NEAREST .01mm
  5. EXTERNAL FINISH:  
EXTERIOR SURFACES: FLAT BLACK POLYURETHANE COATING  
AEROGLAZE Z306 (EXCEPT MOUNTING SURFACE TOP MOUNTING HOLE AREA AND AREA AROUND VENT HOLES AND VENT SLOT).  
MOUNTING AND UNPAINTED SURFACE FINISH:  
CHEMICAL FILM PER MIL-DTL-5541, CLASS 3.  
CONNECTOR FINISH: PASSIVATED.
  6. WEIGHT: 4.06 OZ. [115g] MAX.