

### TECHNICAL FEATURE

#### FEATURES

- Space Qualified
- 10.0 - 12.3 GHz
- 3 - Way

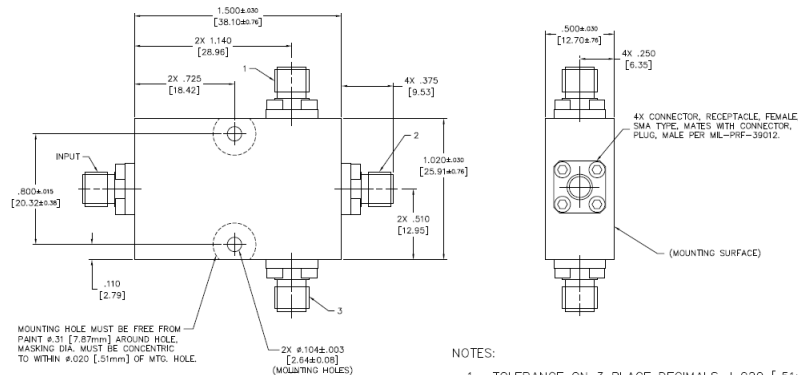
### PRINCIPAL SPECIFICATIONS

Model Number	Frequency Range GHz	Isolation dB Min.	Insertion Loss, dB Max.	Phase Balance Max.	Amplitude Balance dB Max.	VSWR Max.		CW Input, W, Load VSWR out 1.2:1	Weight Max.
						In	Out		
PDM-33-11.15G SQ	10.0 - 12.3	20	0.8	15°	0.3	1.3:1	1.3:1	0.5	50 g.

### TECHNICAL DESCRIPTION / APPLICATION

The PDM-33-11.15G SQ In-Phase Power Divider covers 10.0 - 12.3 GHz. It uses a wideband stripline design which provides high isolation and low VSWR. This unit has been designed, manufactured, and qualified per Merrimac document CENG-0001, "Standard Design Requirements for Space Qualified Devices."

### PACKAGE OUTLINE



#### NOTES:

1. TOLERANCE ON 3 PLACE DECIMALS  $\pm 0.020$  [.51mm] EXCEPT WHERE NOTED.
2. MAX. IS LARGEST DIMENSION ALLOWED.
3. DIMENSIONS = INCHES [mm]
4. METRIC EQUIVALENTS ARE TO THE NEAREST .01mm
5. EXTERNAL FINISH:  
EXTERIOR SURFACES: FLAT BLACK POLYURETHANE COATING  
AEROGLAZE Z306 (EXCEPT MOUNTING SURFACE TOP MOUNTING HOLE AREA AND AREA AROUND VENT HOLES AND VENT SLOT).  
MOUNTING AND UNPAINTED SURFACE FINISH:  
CHEMICAL FILM PER MIL-DTL-5541, CLASS 3.  
CONNECTOR FINISH: PASSIVATED.
6. WEIGHT: 1.76 OZ. [50g] MAX.