

### TECHNICAL FEATURE

### FEATURES

- Space Qualified
- 1.7 - 1.9 GHz
- Quad Hybrid, TNC
- High Power

### PRINCIPAL SPECIFICATIONS

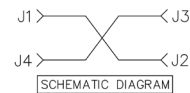
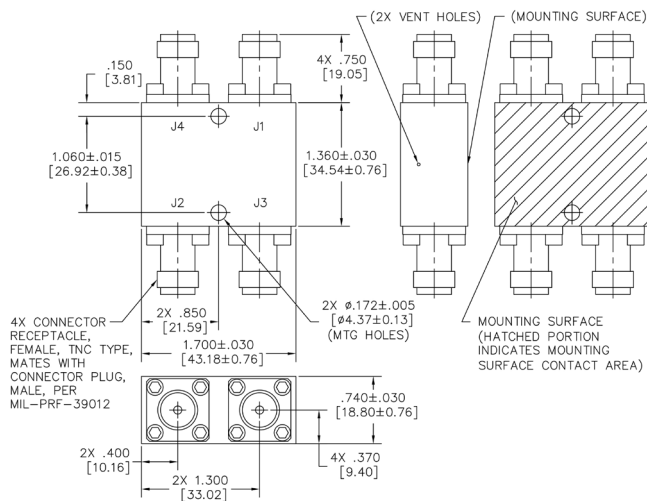
Model Number	Frequency Range GHz	Isolation dB Min.	Insertion Loss, dB Max.	Amplitude Balance dB Max.	VSWR Max. In	Phase Balance dB Max.	CW Input Power	Impedance Nom.	Operating Temperature
QHC-2-1.8G SQ	1.7 - 1.9	22	0.3	0.5	1.20:1	90° ± 2°	25 W*	50 OHM	-55° to +85° C

\* Both inputs with a 1.20:1 load VSWR

### GENERAL NOTES

The QHC-2-1.8G SQ Quadrature Hybrid Divider/Combiner covers 1.7 - 1.9 GHz. It uses a rugged stripline design which provides high isolation and low VSWR. This unit has been designed, manufactured and qualified per Merrimac document CENG-0001, "Standard Design Requirements for Space Qualified Devices".

### PACKAGE OUTLINE



- NOTES:
1. TOLERANCE ON 3 PLACE DECIMALS ±.020 [.51mm] EXCEPT AS NOTED.
  2. MAX. IS LARGEST DIMENSION ALLOWED.
  3. DIMENSIONS = INCHES [mm]
  4. METRIC EQUIVALENTS ARE TO THE NEAREST .01mm.
  5. WEIGHT: 4.23 OZ. [120g] MAX.