

### TECHNICAL FEATURE

#### FEATURES

- Space Qualified
- 10.7 - 12.75 GHz

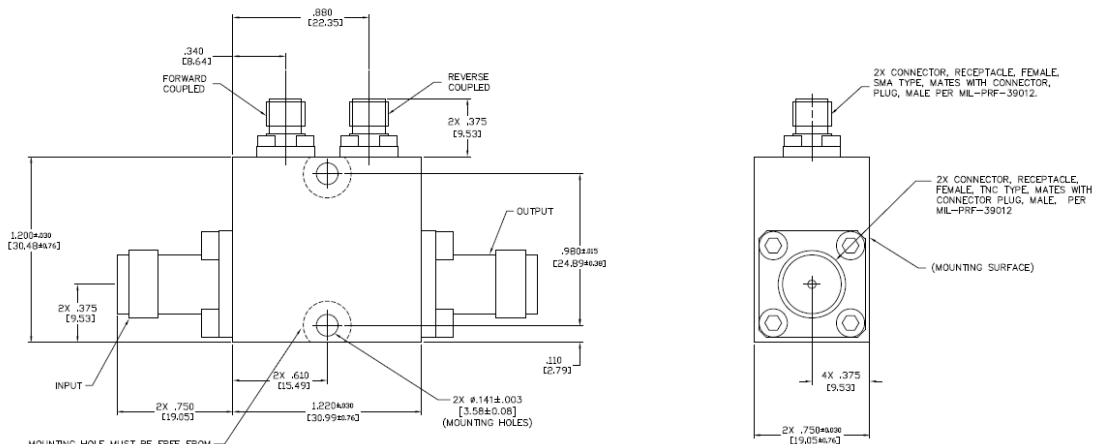
### PRINCIPAL SPECIFICATIONS

Model Number	Frequency Range GHz	Frequency Sensitivity dB Max.	Coupling dB	Insertion Loss, dB Max.	Directivity dB Min.	VSWR Main Max.	VSWR Coupled Max.	CW Power Rating Main Line	Weight Max.
CSM-30-11.73G SQ	10.7 - 12.75	+ / - 0.75	30 +/- 1.2	0.50	15	1.25:1	1.25:1	60 Watts	75 g.

### TECHNICAL DESCRIPTION / APPLICATION

The CSM-30-11.73G SQ directional coupler covers 10.7 - 12.75 GHz with a stripline design. This offers low transmission loss and excellent VSWR. This unit has been designed, manufactured and qualified per Merrimac document CENG-0001, "Standard Design Requirements for Space Qualified Devices."

### PACKAGE OUTLINE



- NOTES:
1. TOLERANCE ON 3 PLACE DECIMALS ±.020 [51mm], EXCEPT WHERE NOTED.
  2. MAX. IS LARGEST DIMENSION ALLOWED.
  3. DIMENSIONS - INCHES [mm]
  4. METRIC EQUIVALENTS ARE TO THE NEAREST .01mm
  5. EXTERNAL FINISH:
    - EXTERIOR SURFACES: FLAT BLACK POLYURETHANE COATING
    - AEROKLAZE Z306 (EXCEPT MOUNTING SURFACE TOP, MOUNTING HOLE AREA AND AREA AROUND VENT HOLES AND VENT SLOT)
    - MOUNTING AND UNPAINTED SURFACE FINISH: CHEMICAL FILM PER MIL-DTL-5541, CLASS 3.
    - CONNECTOR FINISH: PASSIVATED.
  6. WEIGHT: 2.65 OZ. [75g] MAX.