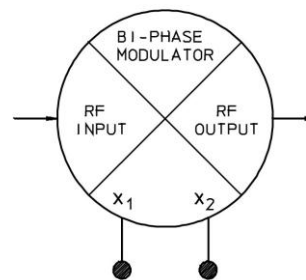


Biphase Modulator - BPM-2-8200 SQ

TECHNICAL FEATURE

FEATURES

- Space Qualified
- High Accuracy
- Hi-Rel Hermetic Flatpack



PERFORMANCE

RF Frequency.....8200 ± 200 MHz
 Phase Balance180° ± 4° max.
 Amplitude Balance0.5 dB max.
 Insertion Loss..... 6 dB max.
 VSWR RF/LO2:1 max.
 Carrier Suppression.....-20 dBc min.

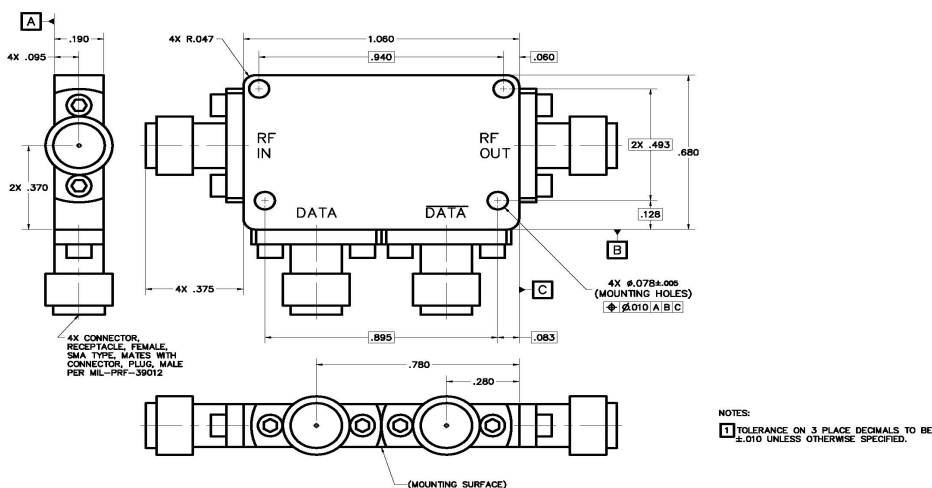
GENERAL SPECIFICATIONS

Impedance.....50 Ohm
 RF Input Level..... 0 dBm max.
 Switching Speed 13 nS Typ.
 Data Levels:
 Logic 1: +15 mA
 Logic 0: -15 mA
 Operating Temperature -55° to +85° C
 Weight..... 0.39 oz (11G) max.

DESCRIPTION

This unit has been designed, manufactured and qualified per Merrimac document CENG-0001, "Standard Design Requirements for Space Qualified Devices".

PACKAGE OUTLINE



Crane Aerospace & Electronics
 Microwave Solutions – Merrimac Industries
 41 Fairfield Place, West Caldwell, NJ 07006
 + 1.973.575.1300 ext. 1309 • mw@crane-eg.com
 www.craneae.com/mw

BPM-2-8200 SQ



This revision supersedes all previous releases. All technical information is believed to be accurate, but no responsibility is assumed for errors. We reserve the right to make changes in products or specifications without notice. Copyright © 2012 Crane Electronics, Inc. All rights reserved.