

Mechlok™ Linear Positioners



- Compact packaging with infinite adjustment
- Inline or offset mounting
- 2000 lb rigid locking
- Range of strokes
- Choice of finishes
- Remote actuation
- Available with Spring Output Force

Crane Aerospace & Electronics Mechlok™ Linear Positioners are built to the same P. L. Porter tradition of quality that has been the aircraft industry standard for over 50 years.



Clamshell Design

- Value priced offset mount construction
- Available in thru-shaft design with unlimited stroke range



Clamshell Mechlok shown with Optional Return Spring



UNIVERSAL ROD ENDS

 Clevis
 Pin
 Spherical Bearing
 Flat Faced
 Standard Formed End
 Long Formed End

AVAILABLE ROD FINISHES

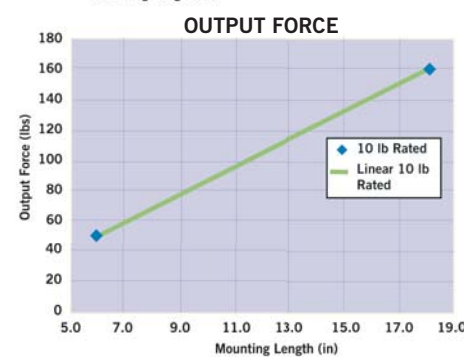
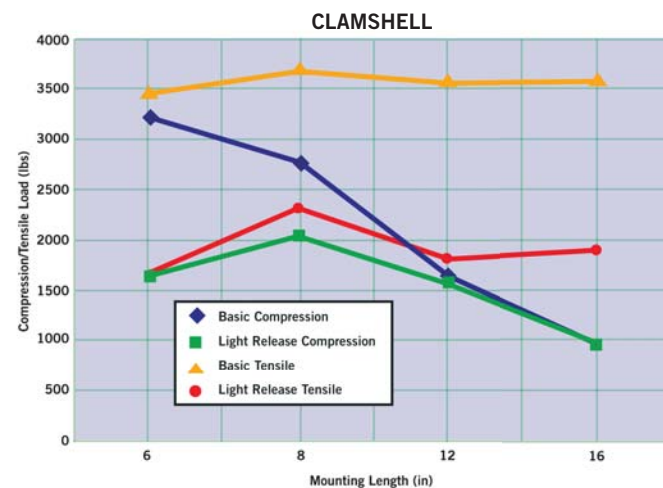
 Black Oxide Standard
 Threaded Rod
 Chrome

RELEASE MECHANISMS

 Lever Release Single or Dual Actuation
 Lever Release
 Compact Lever Release
 Button Release (light-release clamshell only)

See back page for dimensions

CLAMSHELL SPECIFICATIONS	
Fatigue Life @ 600(lbs):	25k Cycles
Release Effort:	6±1 lbs Nominal
Sliding Friction:	<6 lbs
Nominal Operating Load:	200 lbs
Ultimate Load:	See Graph



Tubular Design

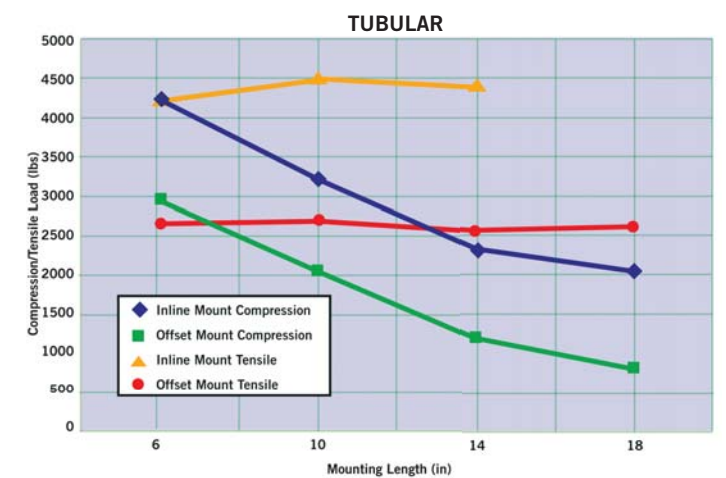
- For inline or offset mounting
- Available as fully enclosed or thru-shaft designs
- Maintenance free and available in several corrosion resistant finishes



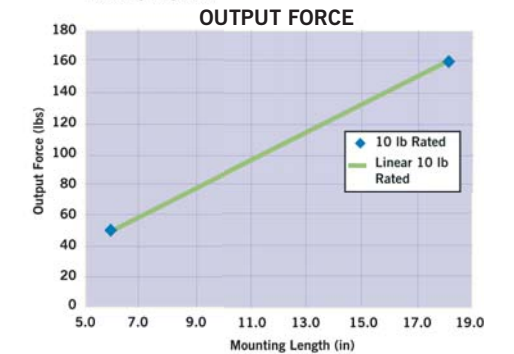
AVAILABLE ATTACH ENDS FOR TUBULAR MECHLOK'S

Extension Shaft End Fittings		Thru-shaft End Fittings
Round Pin	Blade	Pin Mount 90°
Blade with Bushing	Extended Shaft	Threaded Mount 180°
Extended Blade	Clevis	Offset Mount

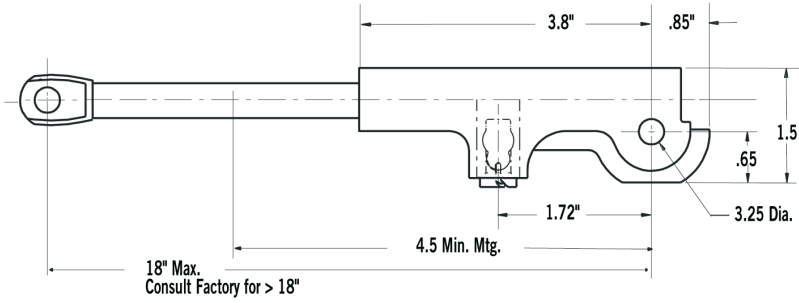
TUBULAR SPECIFICATIONS	
Fatigue Life @ 600(lbs):	25k Cycles
Release Effort:	6±1 lbs Nominal
Sliding Friction:	<6 lbs
Nominal Operating Load:	200 lbs
Ultimate Load:	See Graph



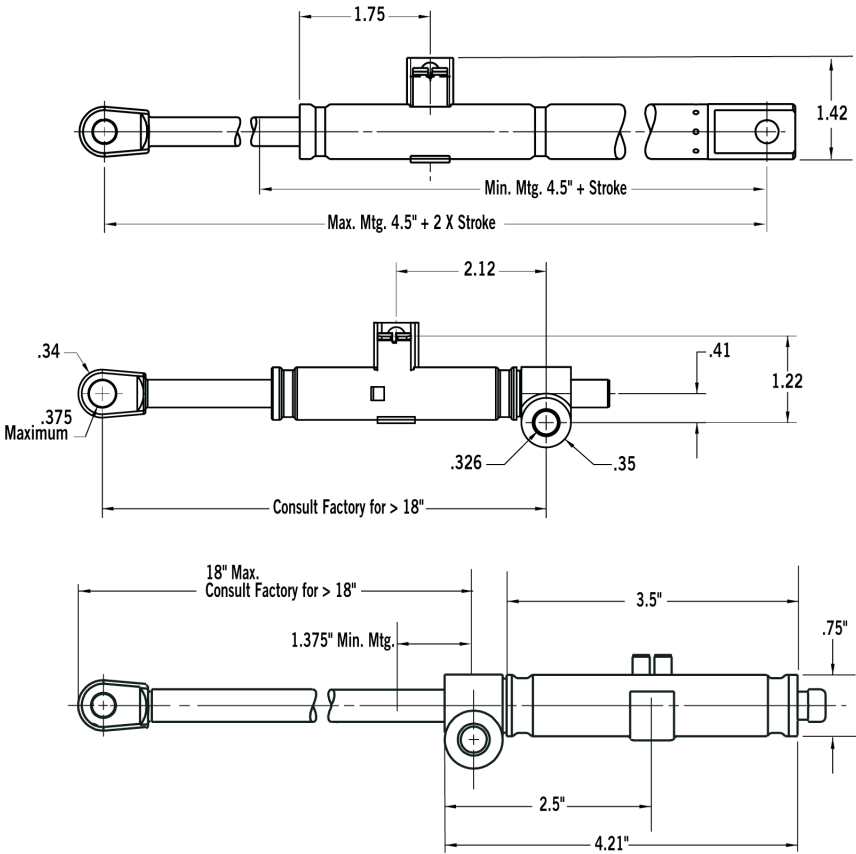
Tubular Mechlok shown with Optional Return Spring



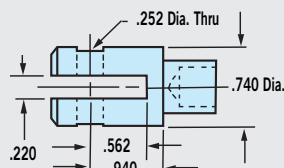
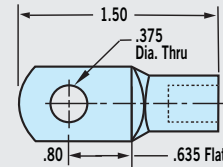
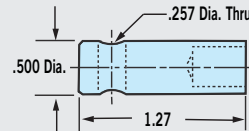
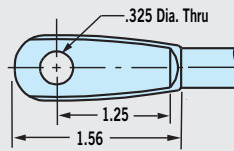
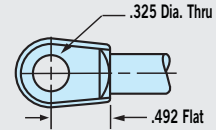
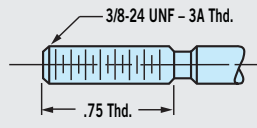
Clamshell Housing



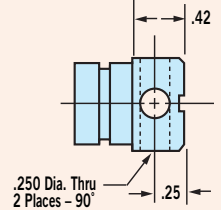
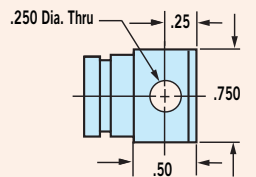
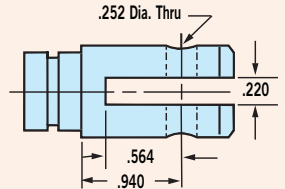
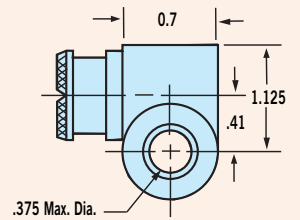
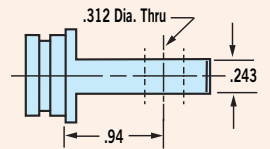
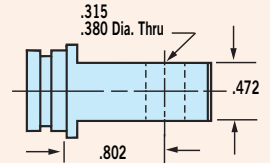
Tubular Housings



Universal Rod Ends for Clamshell or Tubular Housings



Attach Ends for Tubular Housings



CUSTOM APPLICATIONS QUOTED UPON REQUEST

